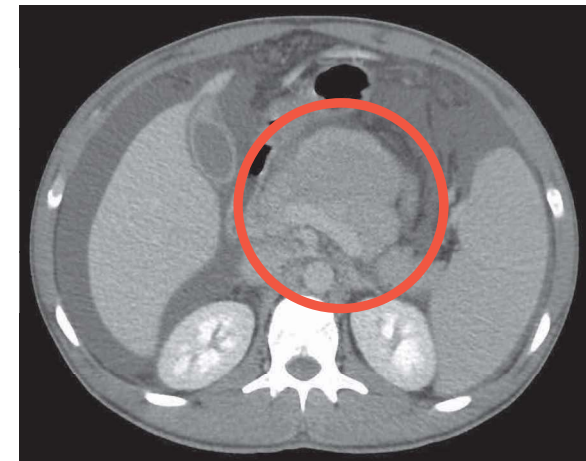
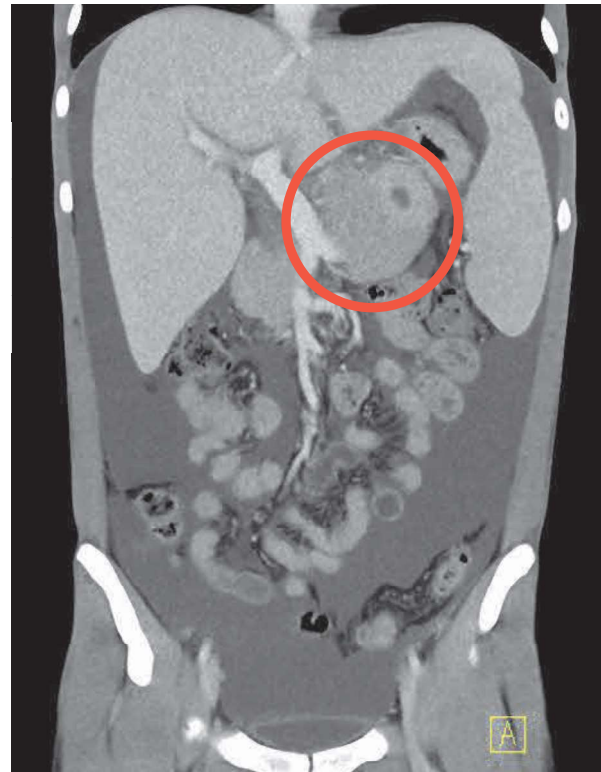


Case discussion for GEIS Contest

Case 1

- 24M in good general condition
- Onset: ascites
- CT scan: 9cm retroperitoneal mass (localized)
- Retrospective imaging review: 3cm nodule already present 5 years before (spine MRI)

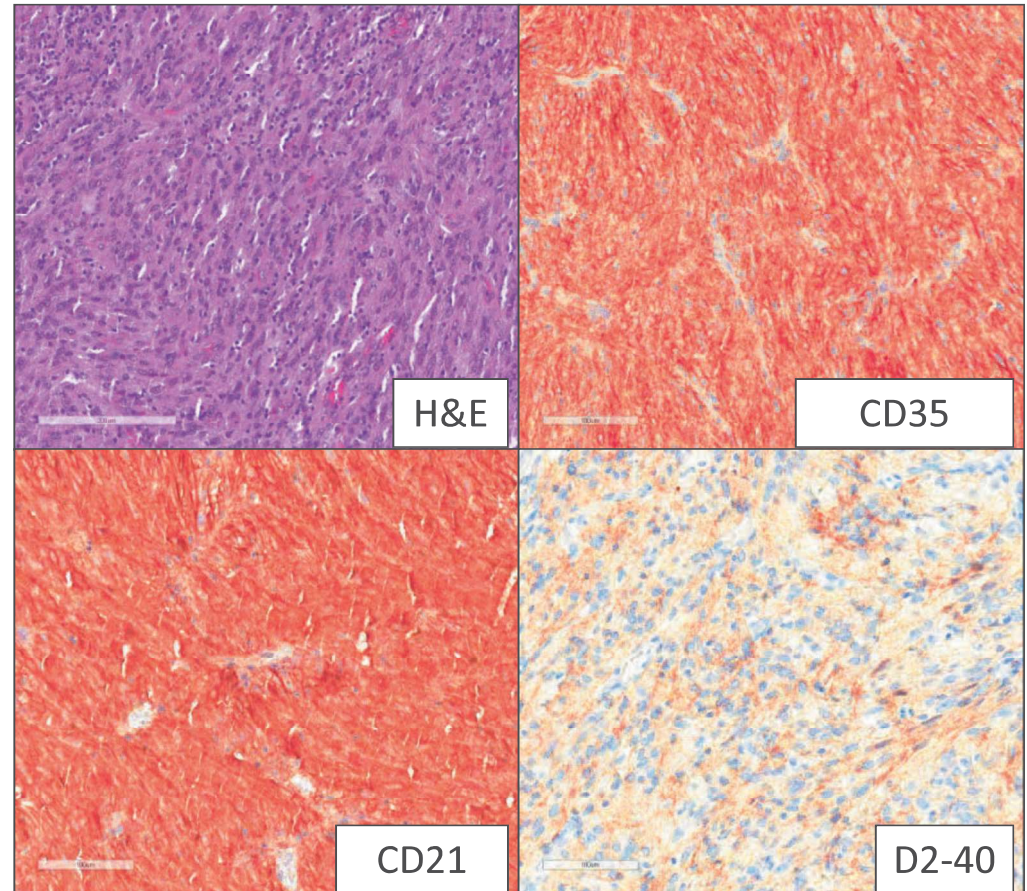
What's next?



Case 1

- 24M in good general condition
- Onset: ascites
- CT scan: 9cm retroperitoneal mass (localized)
- Retrospective imaging review: 3cm nodule already present 5 years before (spine MRI)
- EUS: unclear origin (stomach? Pancreatic body?)
- EUS-FNA: **follicular dendritic cell sarcoma (FDCS)**.

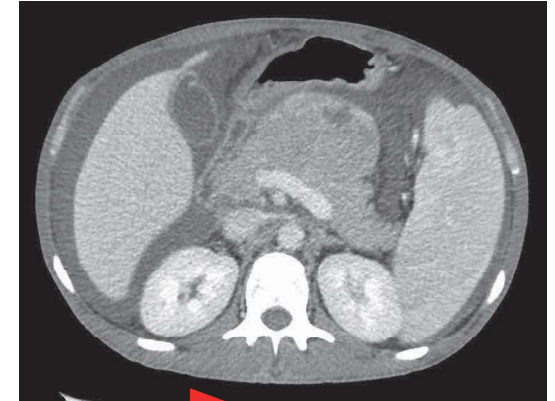
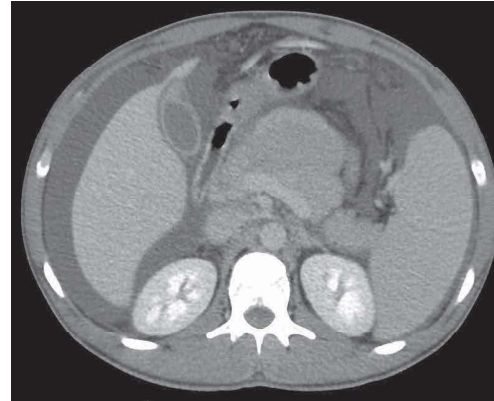
What's next?



Case 1

- 24M in good general condition
- Onset: ascites
- CT scan: 9cm retroperitoneal mass (localized)
- Retrospective imaging review: 3cm nodule already present 5 years before (spine MRI)
- EUS: unclear origin (stomach? Pancreatic body?).
- EUS-FNA: **follicular dendritic cell sarcoma (FDCS)**.
- CTx: Epi-Ifo 1 course → **SD**, acute cutaneous toxicity

What's next?



Epirubicine + Ifosfamide 1 course

